



# Shaping the Future of Forest Intelligence

# Digitizing Forest Operations: Turning data into operational Intelligence

By

**CHANTIERS  
CHIBOUGAMAU**

March 25<sup>th</sup>, 2026  
Hotel Omni Mont-Royal, Montreal, Canada



# Speakers



Loydy Brousseau, forest engineer

[loydy.brousseau@nordic.ca](mailto:loydy.brousseau@nordic.ca)

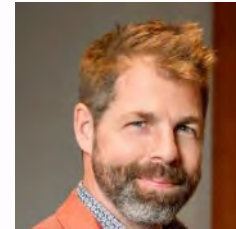
- Team leader forest planning



Dave Lepage, forest engineer

[dave.lepage@nordic.ca](mailto:dave.lepage@nordic.ca)

- Corporate director forestry and supply



If I ask you one question before we start :

# Why do humans manage the forest ?

What would be your answer...



Chantiers Chibougamau is a Québec-based family business founded in 1961. Its main industrial complex, located in Chibougamau in Nord-du-Québec, has one of the largest sawmills in the province and one of the largest engineered wood products manufacturing plants in the world, producing I-joists, glued-laminated timber and cross-laminated timber all bearing the “Nordic” brand.



# CHANTIERS CHIBOUGAMAU

---

**CHANTIERS  
CHIBOUGAMAU**  
SCIERIE LANDRIENNE

**CHANTIERS  
CHIBOUGAMAU**  
SCIERIE BÉARN

**CHANTIERS  
CHIBOUGAMAU**  
SCIERIE LA SARRE

**CHANTIERS  
CHIBOUGAMAU**  
SCIERIE MATAGAMI

**CHANTIERS  
CHIBOUGAMAU**  
USINE CHIBOUGAMAU

**NORDIC**  
KRAFT

**NORDIC**  
STRUCTURES

---

## NORDIC

The brand of all our products

<https://www.chibou.com/fr/accueil>



<https://www.nordic.ca/fr/accueil>

**remsoft**

GLOBAL FORESTRY CONFERENCE '26

## Forest operations

› 3.2 Mm<sup>3</sup>

## 5 sawmills

› 800 000 MBFM

## 1 pulpmill

› 300 000 Dry tons

› 40 MW (energy)

## Engineering wood factory

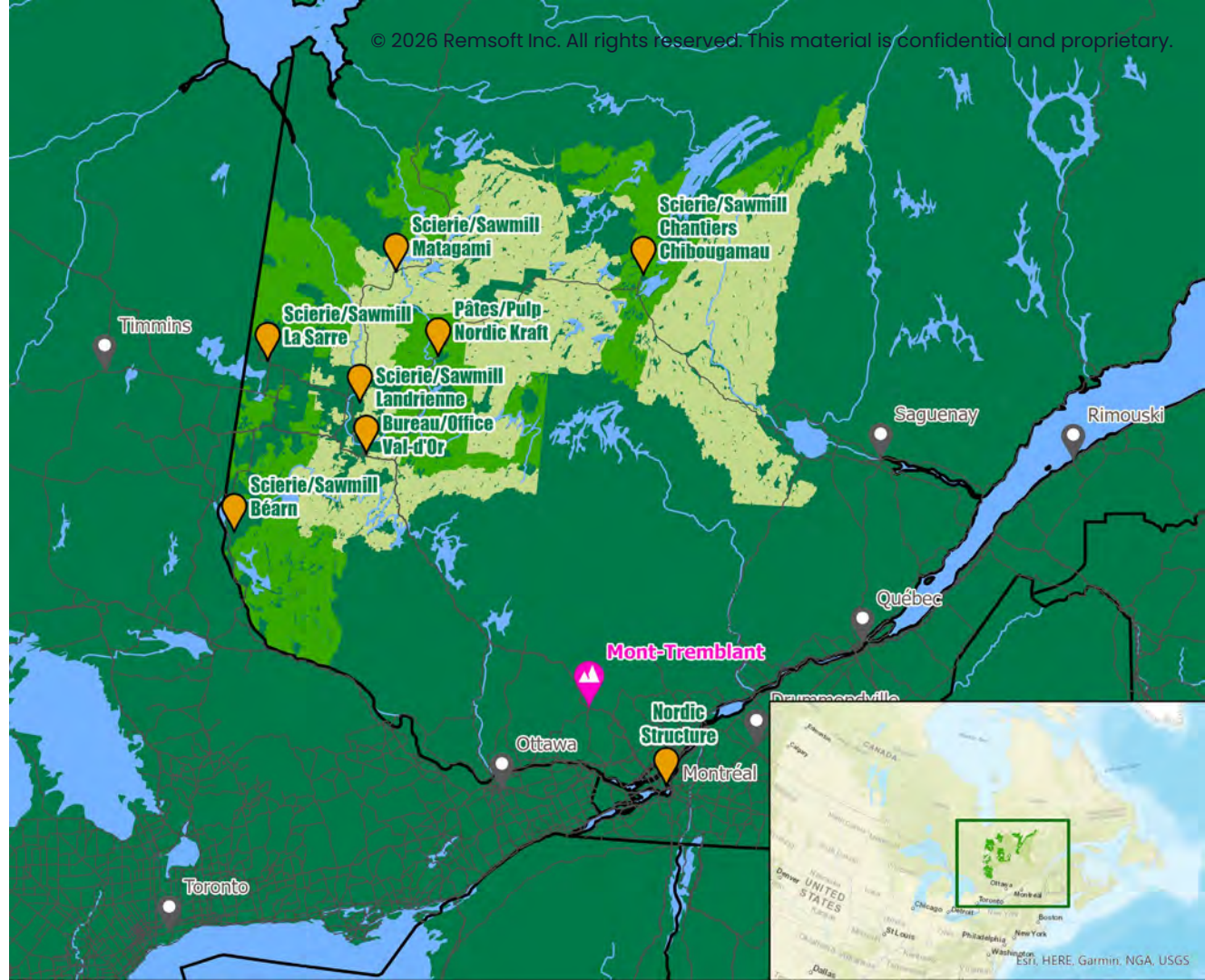
› I-Joits

› Glulam

› CLT

## Modular factory

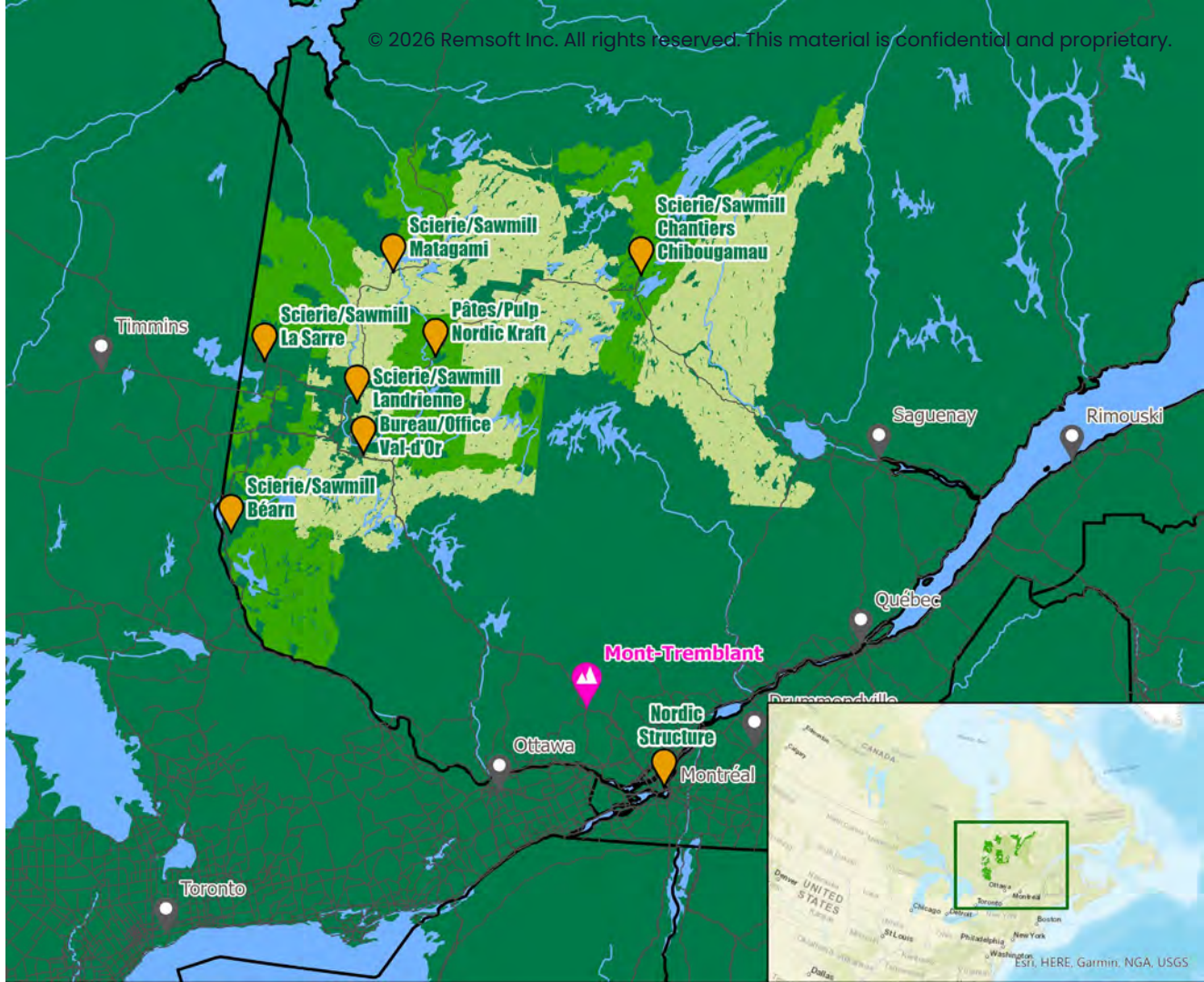
# CHANTIERS CHIBOUGAMAU

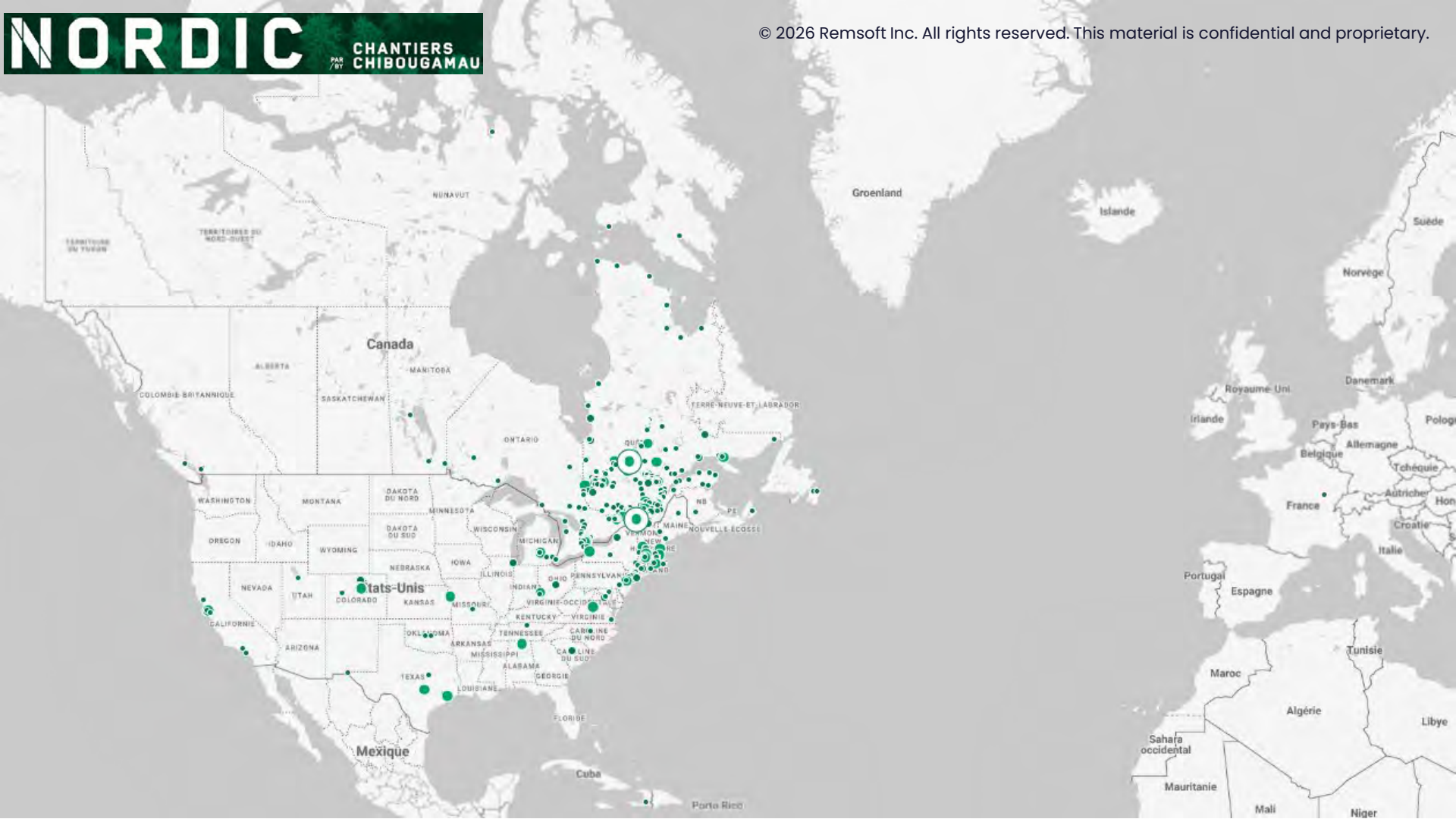


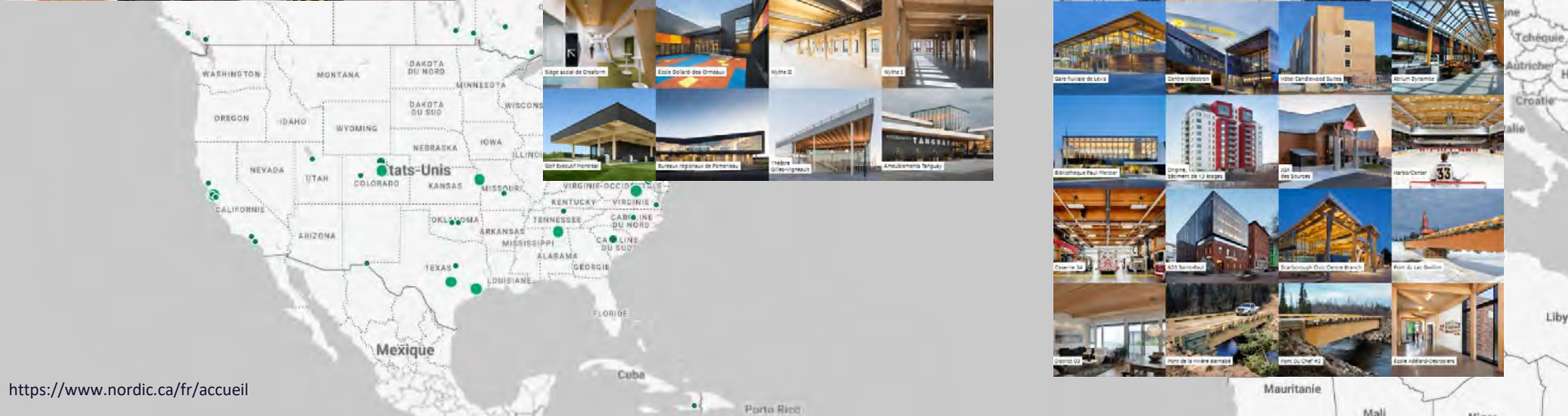
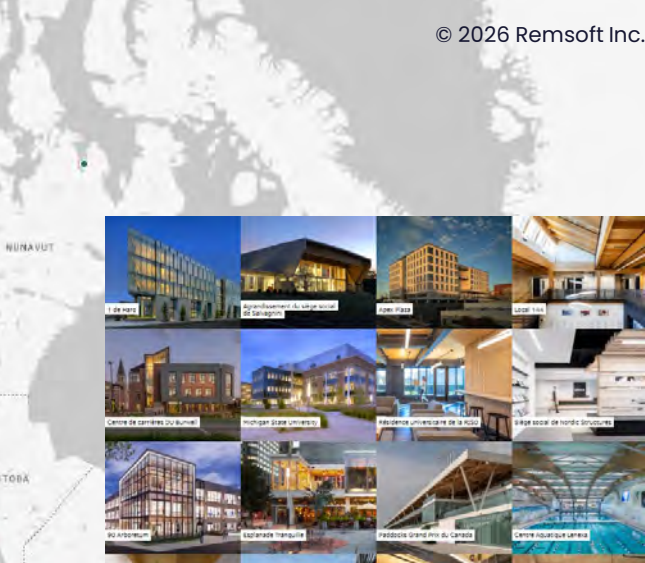
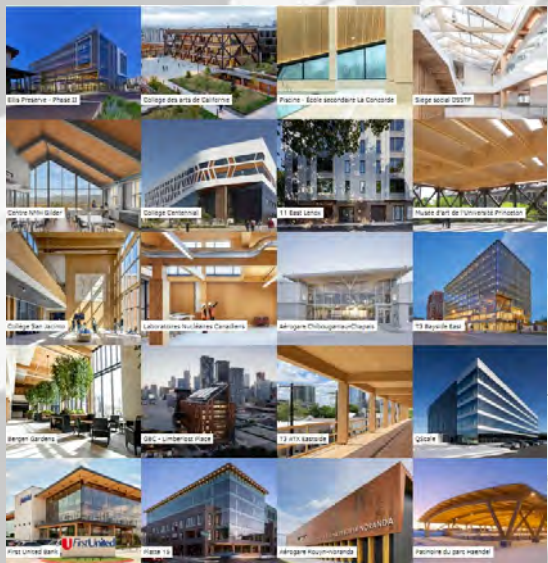
# Company holding FSC® certification across 10 Forest Management Units (FMUs)

- › La Sarre (2)
- › Abitibi-  
Témiscamingue (3)
- › Matagami (2)
- › Chibougamau (3)

**CHANTIERS  
CHIBOUGAMAU**







We continually adopt emerging technology to improve operational efficiency, our company nevertheless remains at its heart a family business. Since 1961, our company has devoted itself to the optimization of the region's resources. Dedication to operational efficiency is only one reason that our company continues to flourish in the face of continuously trying economic conditions. Complemented by our willingness to look beyond the status quo to extract the best and highest value from our raw material, this pursuit exemplifies our corporate culture.



AI-generated

**CHANTIERS  
CHIBOUGAMAU**

# Our vision



AI-generated

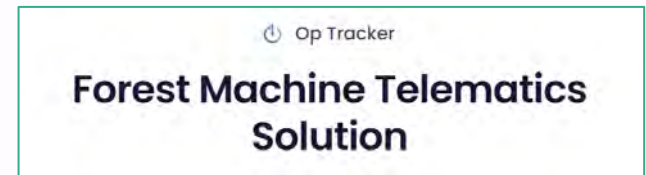
**Digital twin**

**CHANTIERS  
CHIBOUGAMAU**

# REMSOFT at Chantiers Chibougamau

## Collaboration with REMSOFT

- > 2018 – Initial collaboration with FPInnovations (FPDat implementation)
- > 2020 – LIM Geomatics becomes service provider
- > 2024 – Pilot project in forest operation in Abitibi-Temiscamingue (Op Tracker TAB et BOX+)
- > 2025 – LIM Geomatics acquired by REMSOFT



# Op Tracker implementation

## Before

- › Use of consumer-grade handheld GPS units for machine positioning and tracking
- › No standardization of GPS hardware or data formats
- › Time-consuming map production and data processing workflows
- › Manual data collection and map updates requiring frequent visits to each machine
- › Inconsistent data quality, coverage, and reliability



# Op Tracker implementation

## Main objectives

> Standardization of machine tracking tools



> Improved harvesting performance through increased use of available data (imagery, LiDAR, etc.)

> Reliable field map versioning to ensure operational compliance (legal and certification requirements)



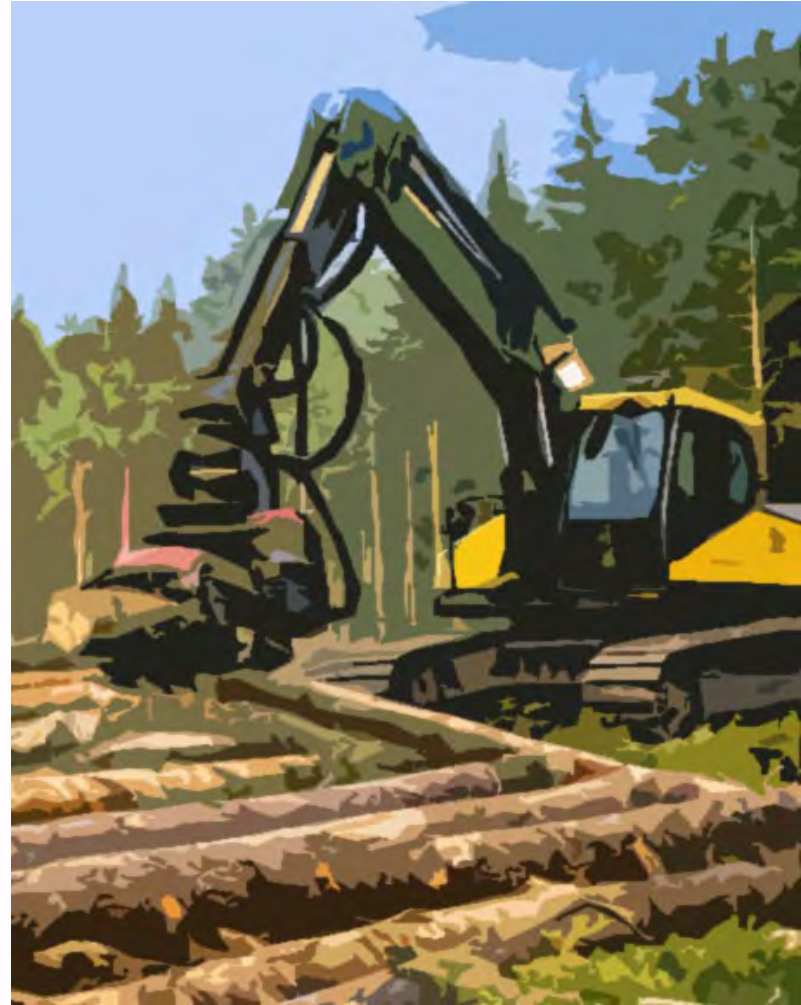
> Increased automation of data collection and processing workflows

# Op Tracker implementation

## Desired features

- > Low-cost hardware system
- > **User friendly interface for operators**
- > System compatible with our data environment  
(Esri ArcGIS)
- > Full offline capability

**CHANTIERS  
CHIBOUGAMAU**

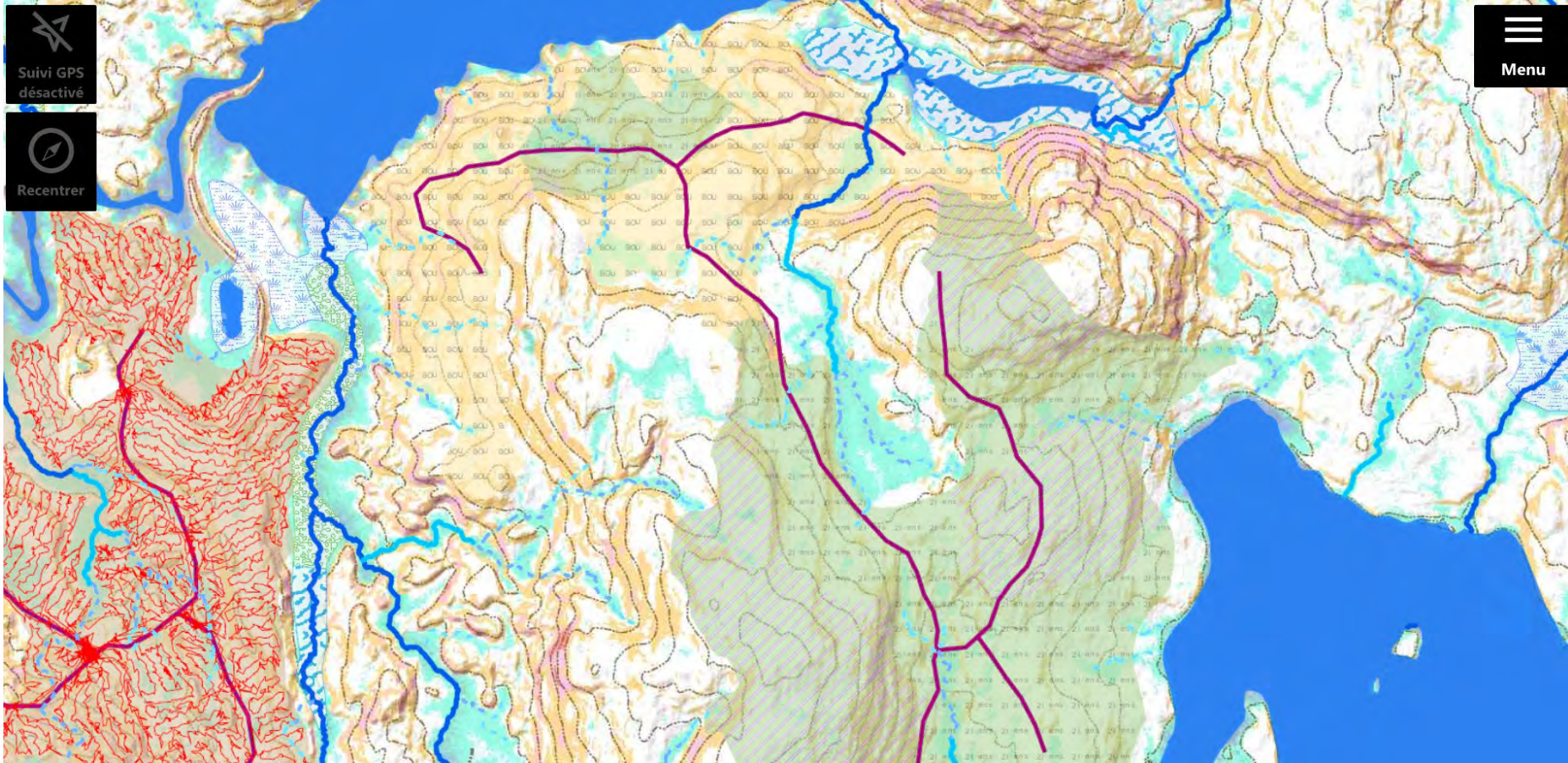


# Op Tracker implementation

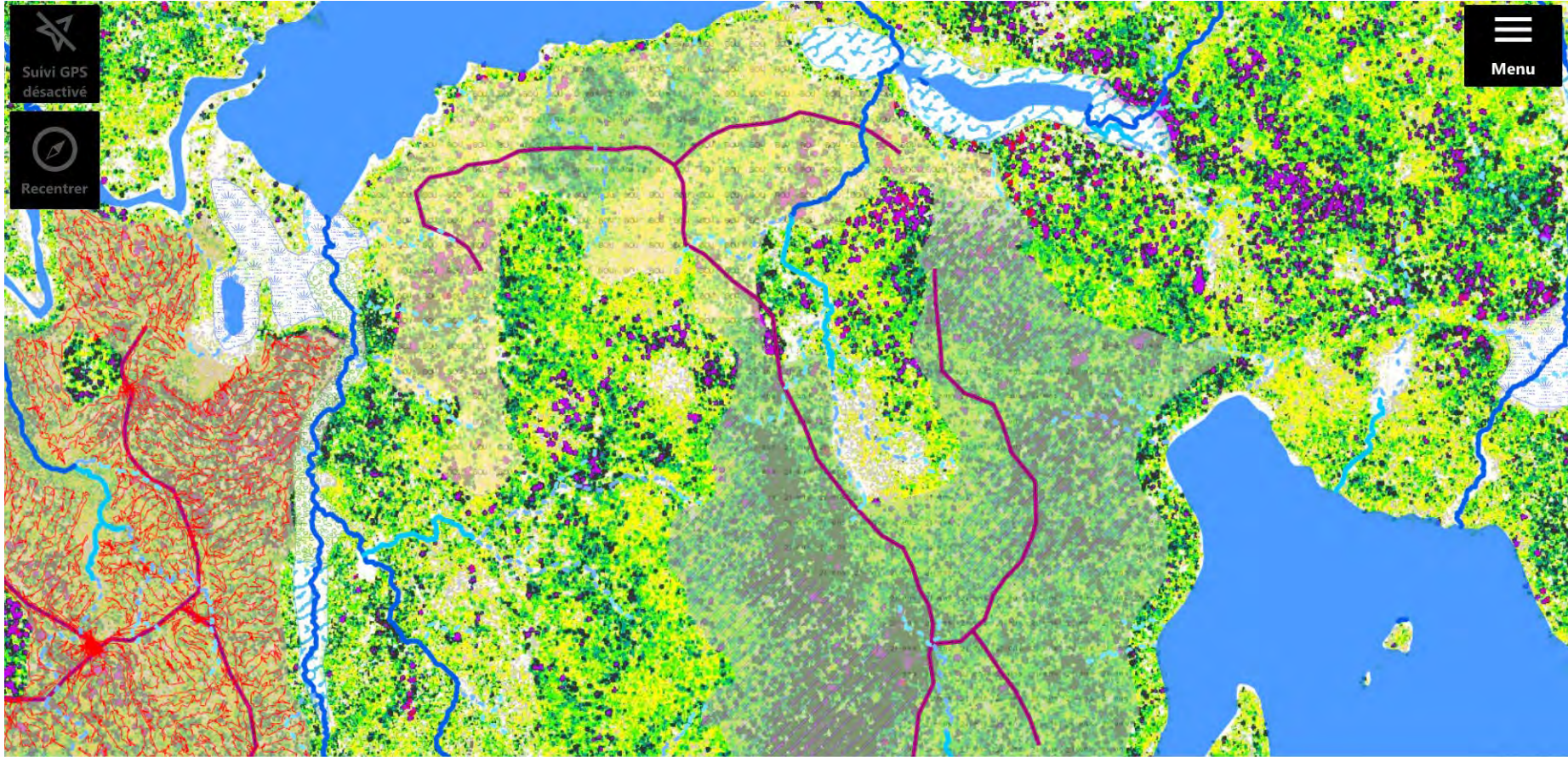
## Results

- › Op Tracker TAB aligned with short-term needs
  - › Lower investment costs
  - › Reduced technical complexity (contractor owned machine)
- › Progressive deployment across all operations (2024–2026)
- › Standardized use of rugged Android tablets (Samsung Galaxy Tab Active 4 Pro)

# Op Tracker implementation



# Op Tracker implementation



# Op Tracker implementation

## Top benefits

- › Daily to weekly operational tracking of harvesting activities (cut-over)
- › Prevention of boundary overruns, improving compliance and control
- › Better knowledge of harvest progress in field at corporate level
- › Improved predictability for machinery relocation and logistics planning
- › Significant reduction in time spent on data collection and processing

**Strong return on investment (ROI of 2.6)**

# Op Tracker implementation

## Top benefits

- › Daily to weekly operational tracking of harvesting activities (cut-over)
- › Prevention of boundary overruns, improving compliance and control
- › Better knowledge of harvest progress in field at corporate level
- › Improved predictability for machinery relocation and logistics planning
- › Significant reduction in time spent on data collection and processing

**Strong return on investment (ROI of 2.6)**

**CHANTIERS  
CHIBOUGAMAU**





# Op Tracker implementation

## What's next

- › Enhanced use of digital maps and visual layers (TPKs)
- › GeoNotes integration into daily operations
- › Machine-based productivity monitoring
- › Automated production reports
- › Machine to machine communication



# Telematics at Chantiers Chibougamau

## The present year

### ABITIBI-TÉMISCAMINGUE operations

- > 38 machines (Op Tracker)
- > 5,000,000+ data points
- > Near 20,000 ha harvested (100 blocks)
- > Over 22,000 km of tracking

### NORTHERN QUEBEC operations

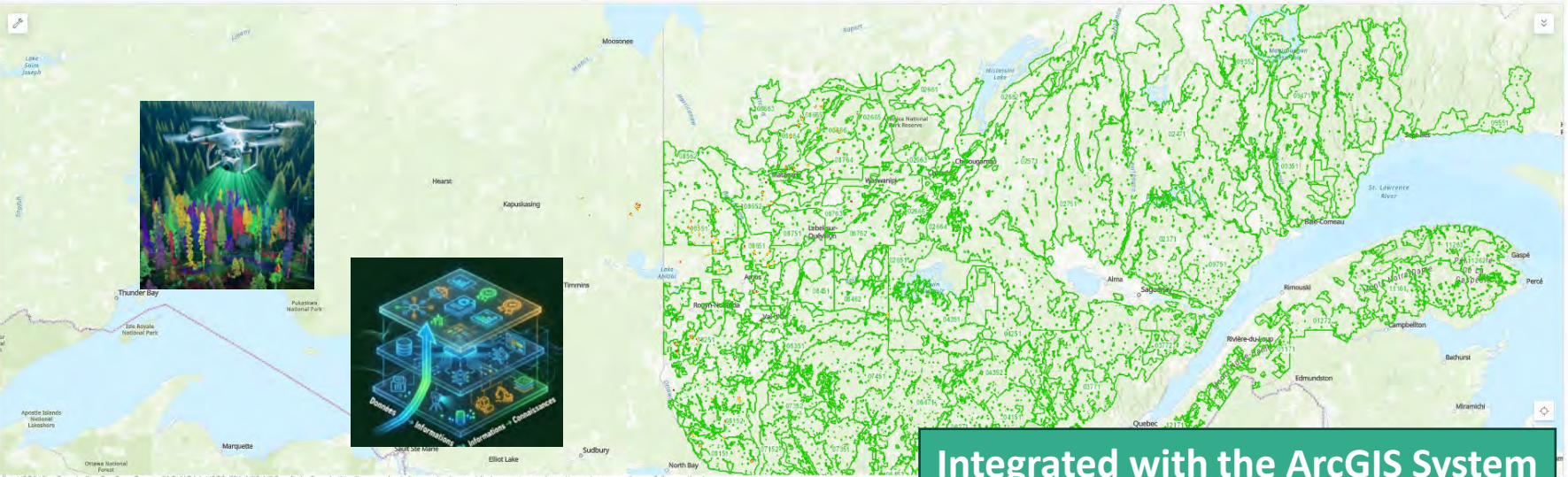
- > 56 machines (GSFlog / GSF Nav)
- > 11,000,000+ data points
- > Near 6,000 ha harvested (50 blocks)

# Telematics at Chantiers Chibougamau

Op Tracker Suivis Dashboard

Date de recote :	Entrepreneur	Chantier	Zone de Tarif	UAF	Division
No category selected	No category selected	No category selected	No category selected	No category selected	Beam, La Sarre, Landrienn...
Division	Voeqm	Veqm	Vsab	Vpig	Sup
Beam	294,066.6	148,816.5	85,889.7	22,861.2	3,642.7
La Sarre	348,788.8	176,387.4	19,135.4	150,046.6	3,484
Landrienne	581,596.8	395,753.2	84,570.4	83,245.8	5,159.1
Matagami	431,212.2	364,877.9	7,042.7	56,209.1	3,711.6
Ontario	141,526.6	0	0	0	0
	<b>1,797,191.1</b>	<b>1,085,835</b>	<b>196,638.2</b>	<b>312,362.7</b>	<b>15,997.4</b>





**Integrated with the ArcGIS System**

Esi, USGS | Esi Canada, Esi, TomTom, Garmin, FAO, NOAA, USGS, EPA, NPS, NRCan, Parks Canada | Visualisez la licence d'utilisation à l'adresse suivante: <https://www.donneesquebec.ca/fr/licence/rcc-by>

**\*\*Les volumes sont calculés à titre indicatifs\*\***



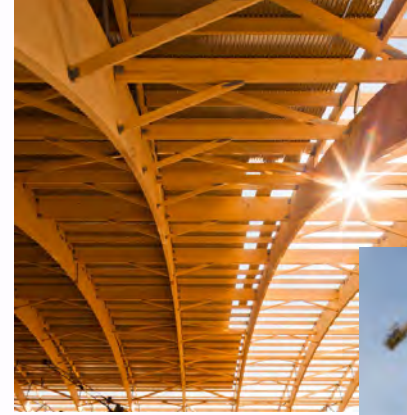
# Key Takeaways

- › Large-scale forest operations require precise, reliable, and timely data
- › REMSOFT enabled the transition from manual, fragmented data collection to standardized, automated tracking
- › Real-time operational visibility improved compliance, efficiency, and planning
- › The implementation delivered strong operational benefits and a positive ROI
- › Data integration is critical to sustainable, efficient, and responsible forest management



# Why do humans manage the forest ?

# Why do humans manage the forest ?



humans need it...



CHANTIERS  
CHIBOUGMAU

