



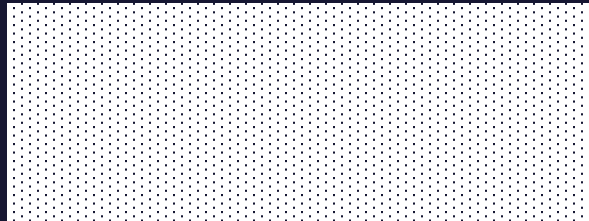
Shaping the Future of Forest Intelligence



Telematics: From Data Collection to Better Decisions

Op Tracker, Log365, and Forest Machine Connectivity

RGFC '26 / March 23rd, 2026



Simon Ketcheson

Product Manager, Telematics

What We'll Cover

1. Why telematics?
2. Where we are today
3. What's next?
4. A directional view of what is coming later



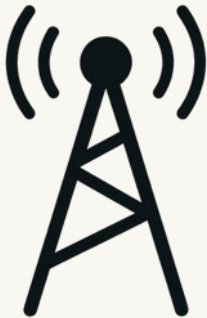
Op Tracker



Log365



Why Telematics Matters...



Remote operations



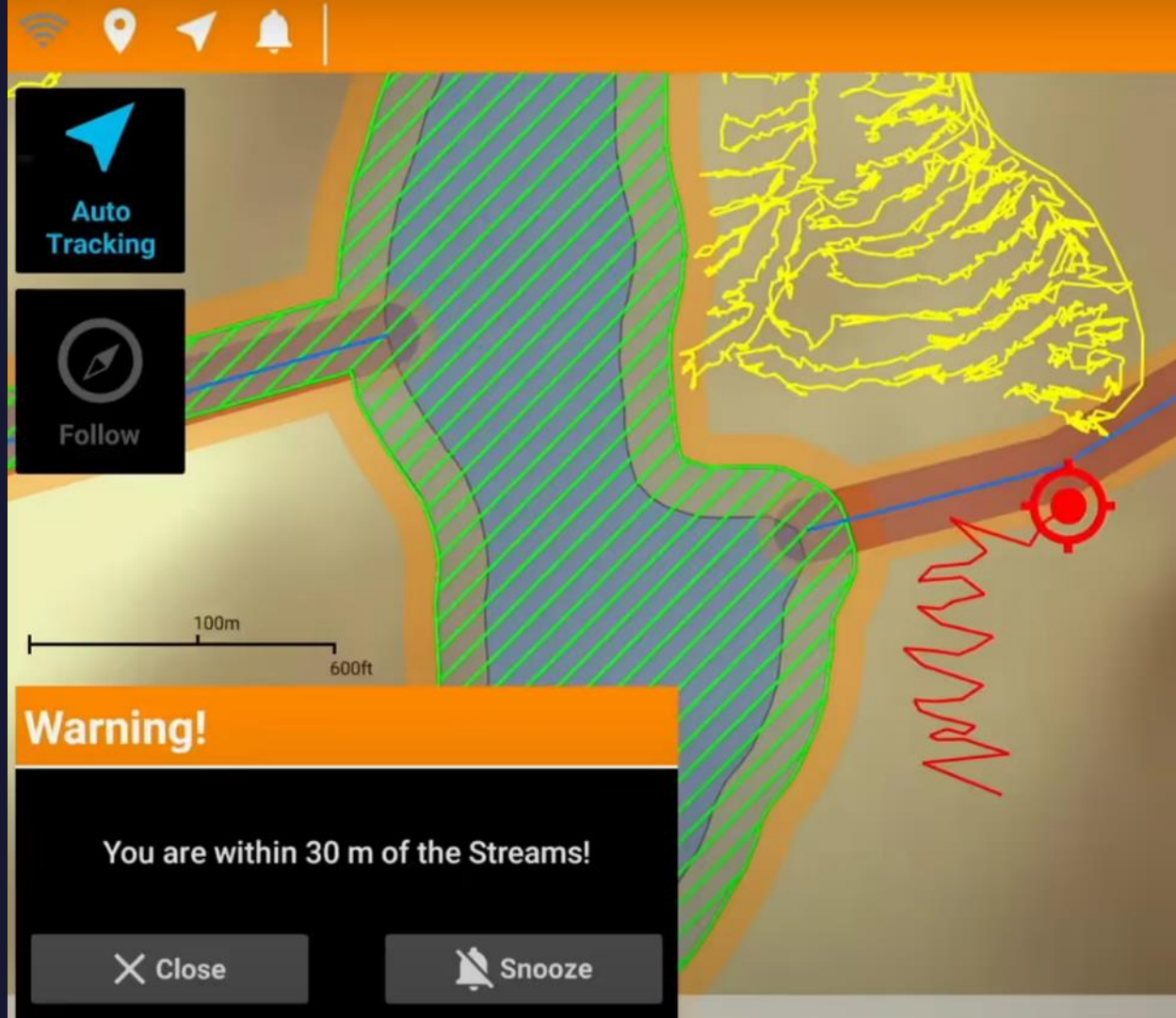
Data already exists



Decisions lag behind

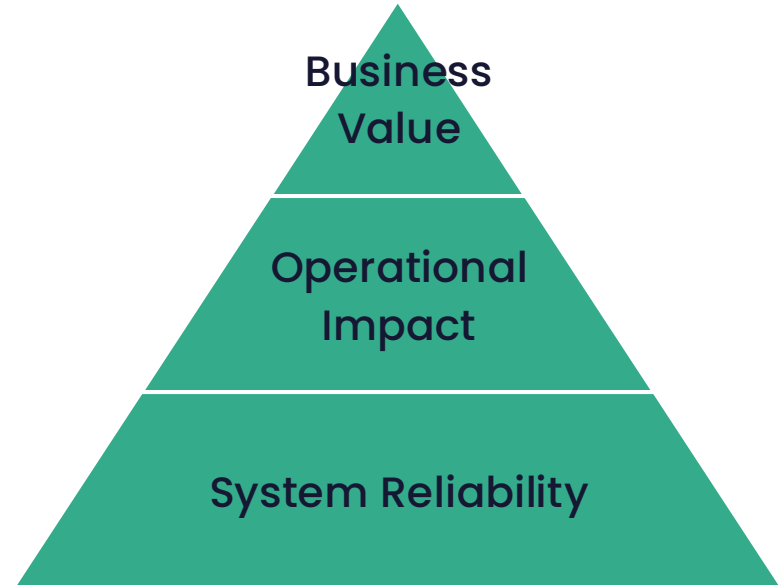
...and Why It's Been Hard

- Long product lineage
- Fragmented platforms
- Patching vs progressing



“Great, I’ve Got My Data... Now What?”

- Data people **trust**
- Data that **shows up where decisions are made**
- Data that **drives action**, not just reporting



Now: Where We Are Today



Op Tracker Today

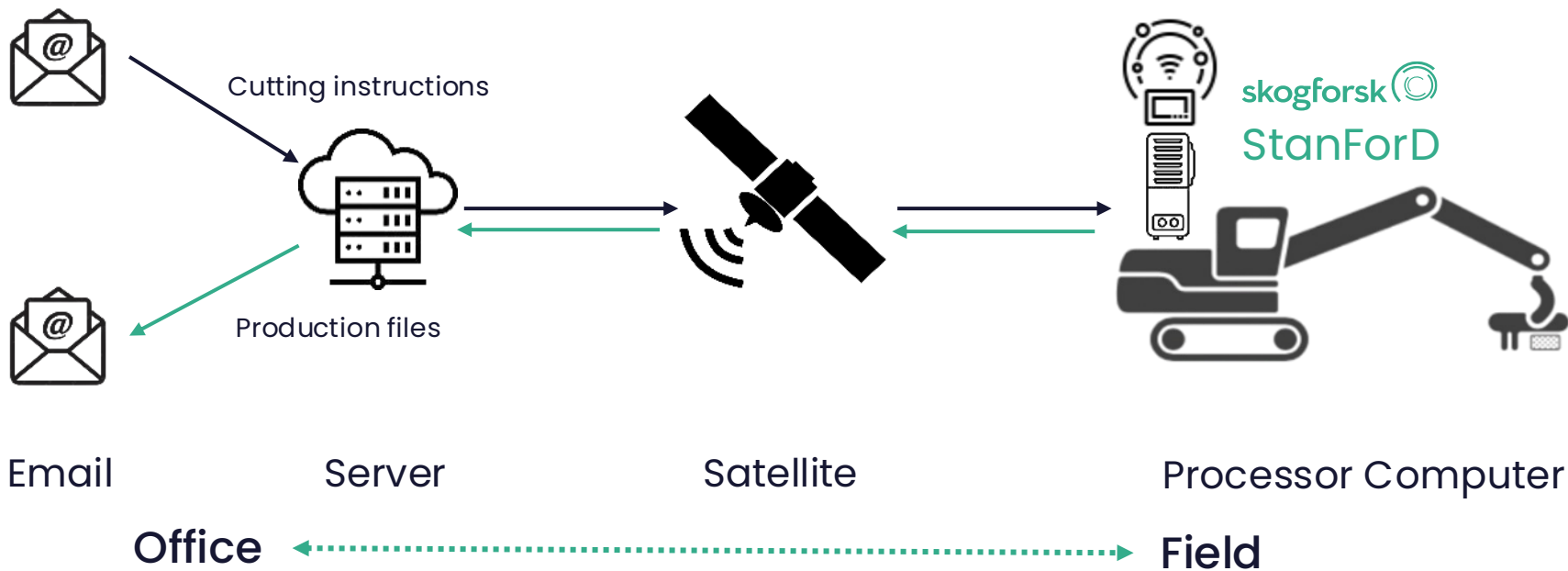
Operational Visibility

- Esri-based, map-centric visibility: tracks, depletions, GeoNotes, offline maps
- Flutter-based mobile app released for iOS; Xamarin support continues
- FPTrak, TAB and BOX+ web apps continue to support existing workflows



Log365 Today

Closing the Machine-to-Office Gap



Next: Strengthening the Foundations



Op Tracker – What's Next

Operational Visibility

- Stabilize and refine the Flutter mobile experience
- Improve BOX+ web app for supervisors
- Reduce surprises across FPTrak, TAB, BOX+ and mobile



Log365 – What's Next

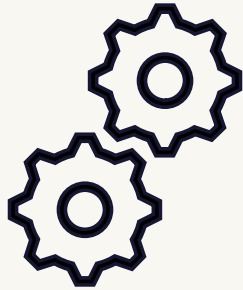
Closing the Machine-to-Office Gap

- Strengthen file lifecycle, diagnostics, and monitoring
- Deepen StanForD normalization and mixed-fleet coverage
- Lay the groundwork for analytics, BI, and integrations



Telematics – What's Next

Reliability



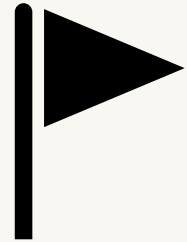
Telemetry that 'just works'

Confidence



Data we trust and can explain

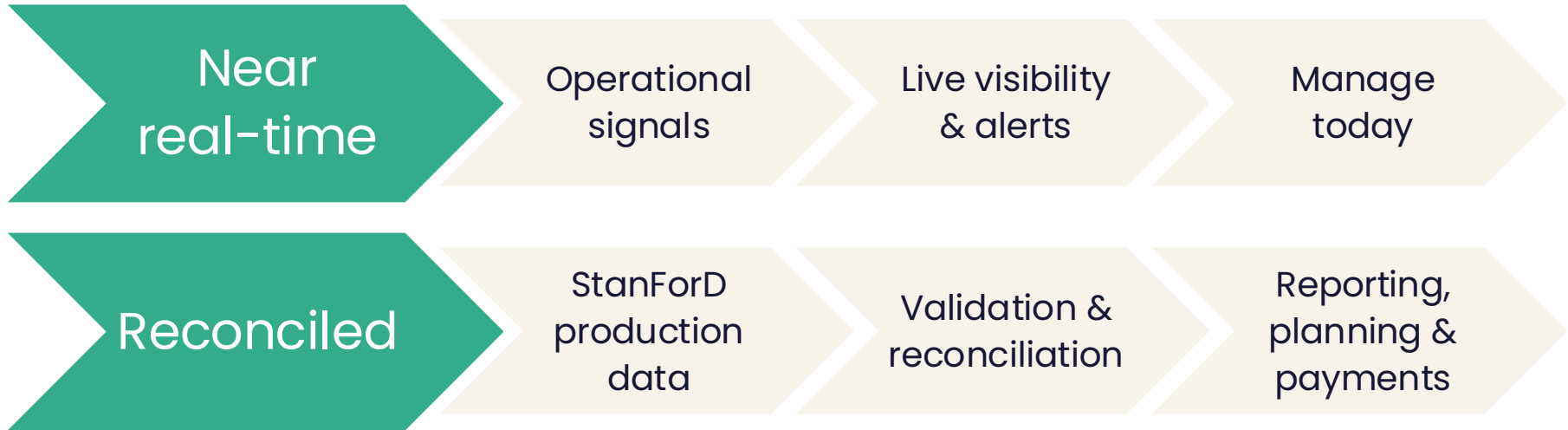
Better Decisions



Earlier action, fewer surprises

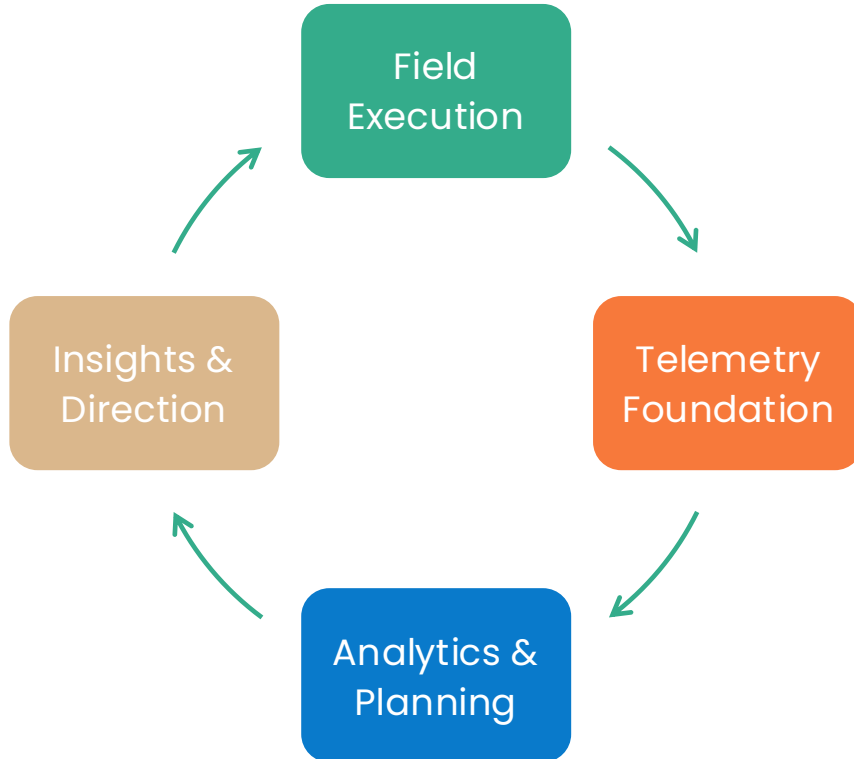
Later: Directional Vision

Two Streams of Telemetry Data

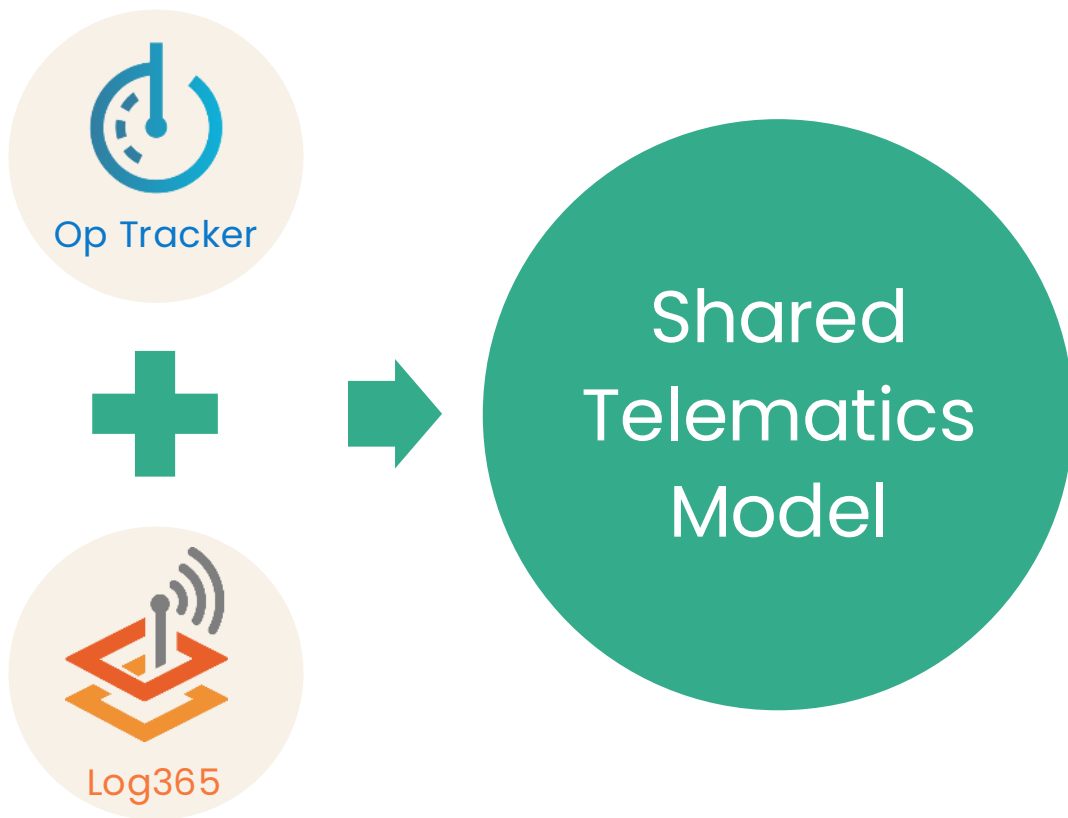


Forestry Execution Loop

Reducing friction from forest to office and back



Unified but Modular Telematics

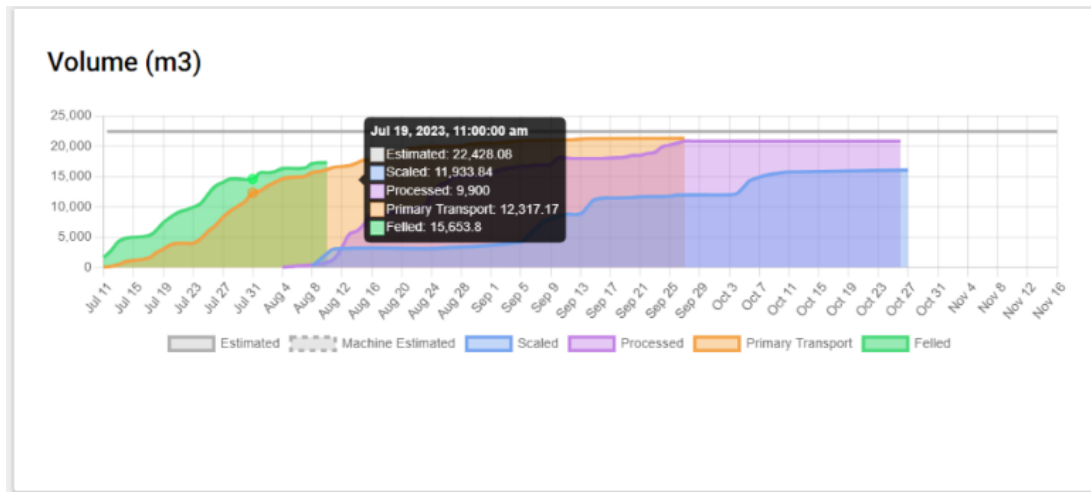




Forest Machine Connectivity (FMC)

An Example of What's Possible

- Large-scale deployment combining Op Tracker, telemetry, and planning
- Several hundred machines across multiple contractors and regions
- Earlier supply-chain visibility and measurable utilization improvements



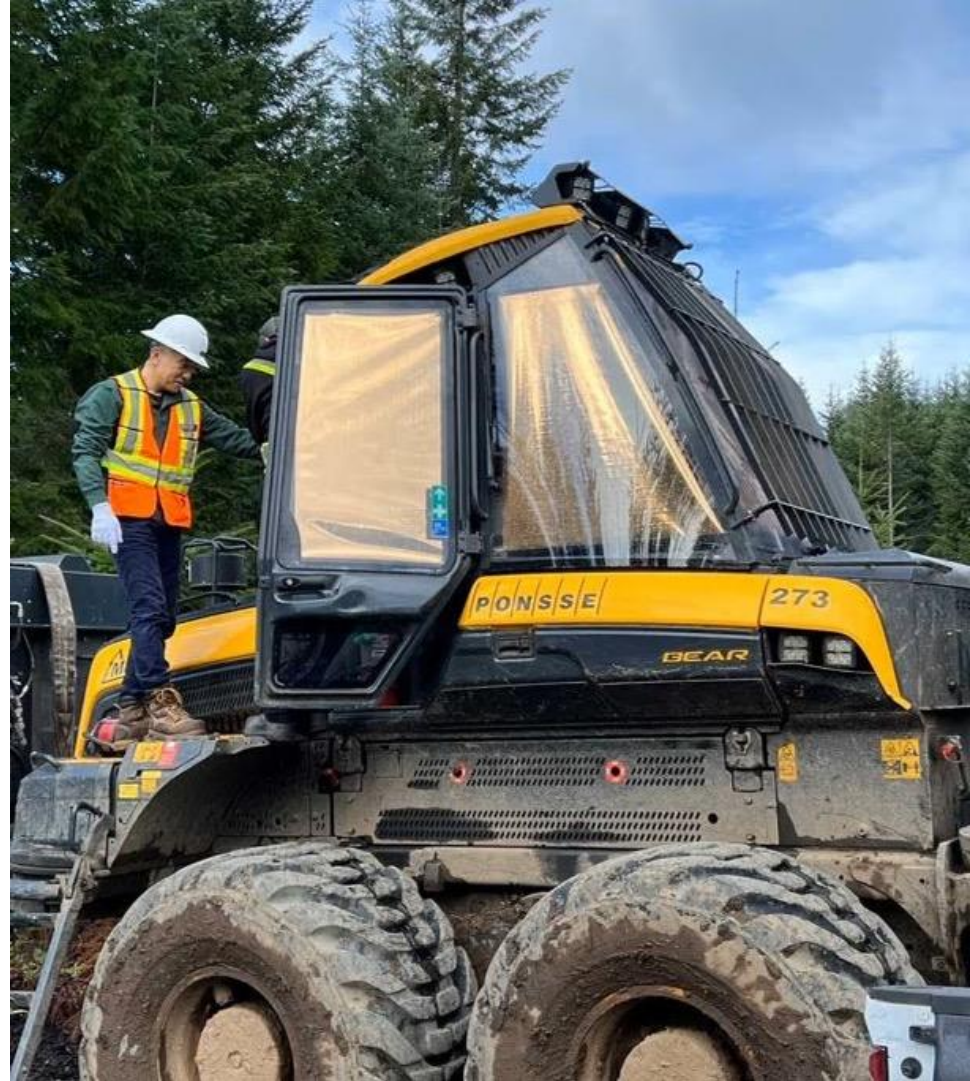


Future analytics & integrations

- **Log365 Analytics**
Trusted telemetry, standard views, and APIs
- **Embedded App Integrations**
Telemetry surfaced in Remsoft's apps
- **Decision-Shaping Insights**
From "we have data" to "we know what to do next"

Discussion & Q&A

- Where is your biggest pain: collecting data, trusting data, or using it?
- What's one question you'd love your telemetry data to answer automatically?





Canada/Head Office

500-77 Westmorland St.
Fredericton
(New Brunswick)
Canada E3B 6Z3

Main Line: 1-506-450-1511
Toll Free: 1-800-792-9468
info@remsoft.com

Canada/Ottawa Office

2685 Queensview Drive, Suite 100
Ottawa
(Ontario)
Canada K2B 8K2

Brazil

Av. Cassiano Ricardo, 601.
Sl 163. Jardim Aquarius
12246-870.
São José dos Campos-SP.
Brazil.

Tel: +55 12 3600 8094

Asia Pacific

Canterbury
New Zealand

Tel: +64 (0) 22 43 99 808



[linkedin.com/company/remsoft-inc.](https://www.linkedin.com/company/remsoft-inc.)



[facebook.com/remsoft](https://www.facebook.com/remsoft)



twitter.com/RemsoftInc



[youtube.com/user/RemsoftInc](https://www.youtube.com/user/RemsoftInc)