



# Shaping the Future of Forest Intelligence





Op Tracker. A Tolko Introspective.  
*Or things I tell my boss to keep me employed.*



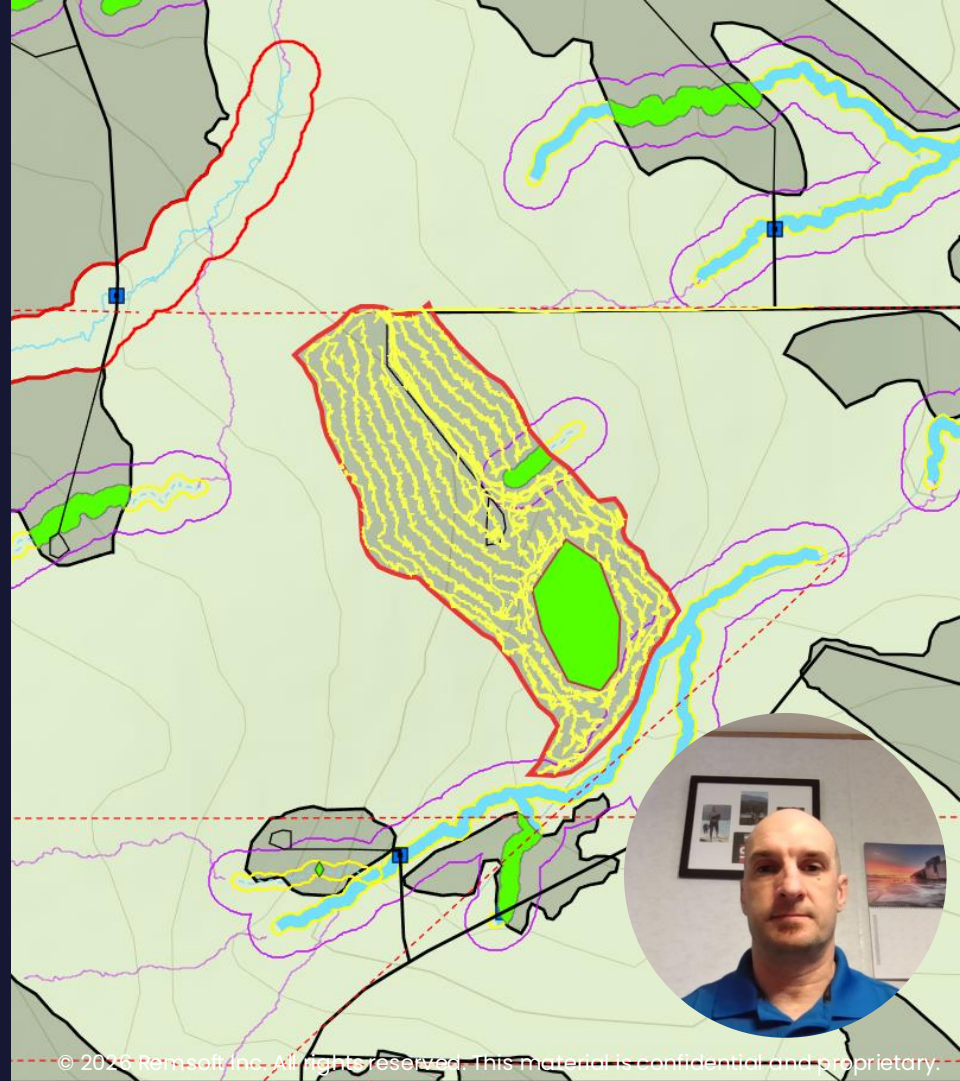
# Mike Morgan

- Woodlands Operations Supervisor
- NAIT Grad (1996)
- 16 Years with **Tolko**



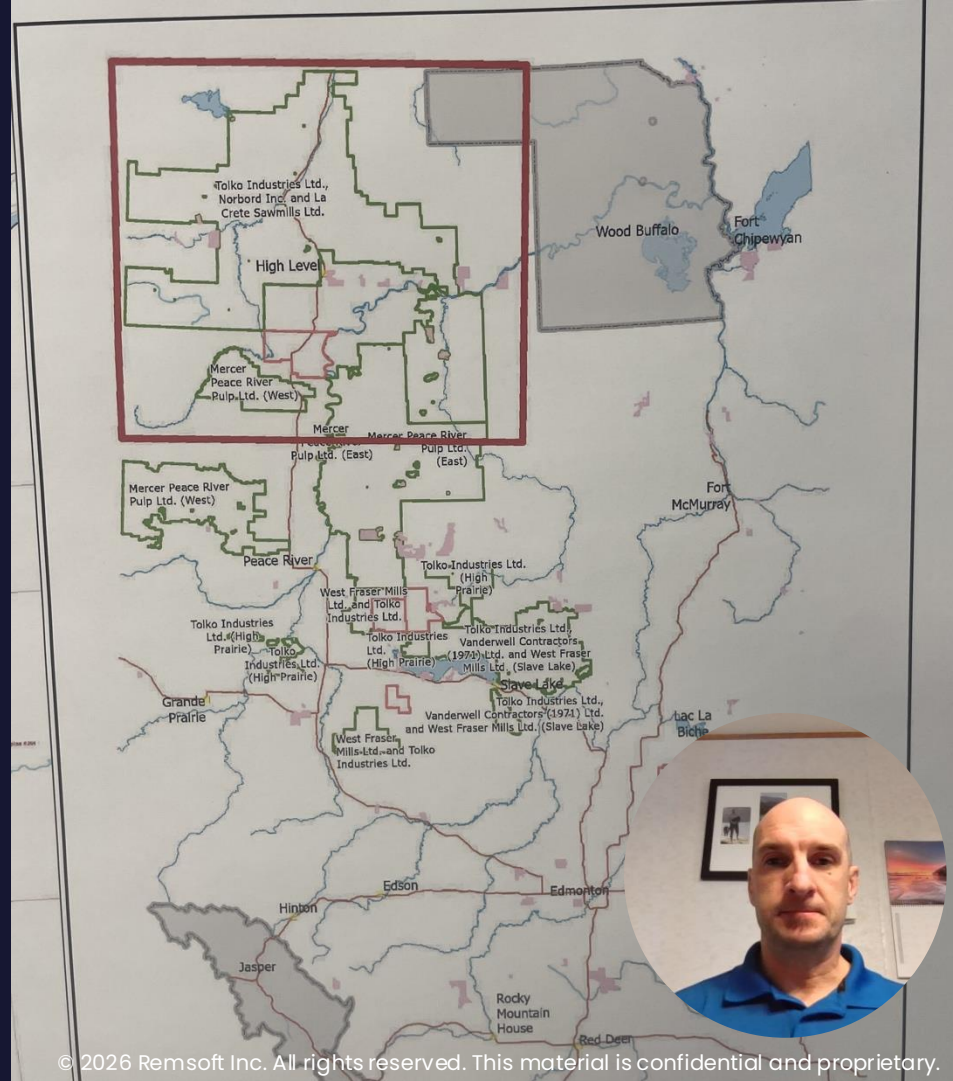
# Agenda

- Background
- Op Tracker History
- Current Usage
- Perspective
- Future Outlook
- Questions



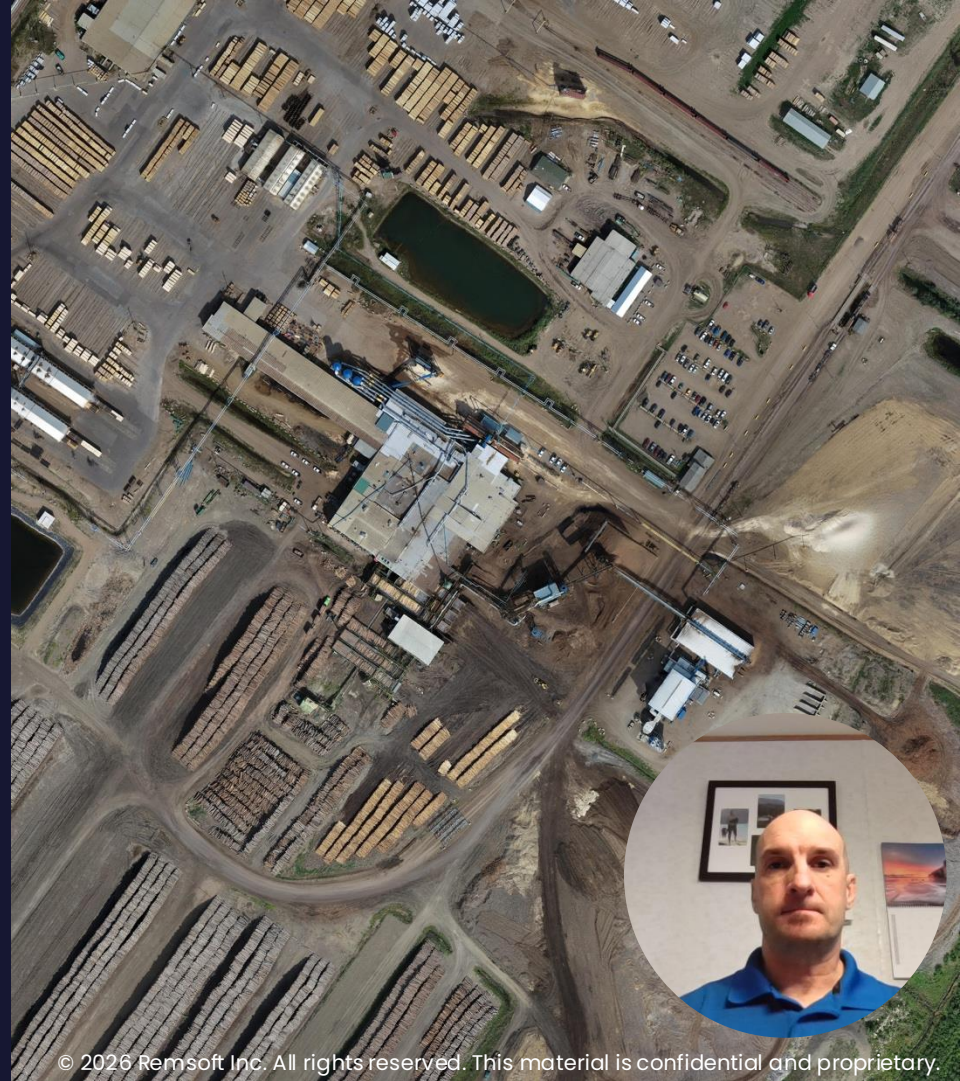
# Background

- ❑ Tolko Industries Ltd.
- ❑ Located in NW Alberta, 800km north of Edmonton.
- ❑ Total FMA area is **6.5 million ha.**
- ❑ Actual Operational Area is **3.6 million ha.**



# Background (Cont'd)

- ❑ Tolko Industries Ltd.
- ❑ Annual Allowable Cut is **1.6 million m<sup>3</sup>**.
- ❑ Sawmill produces **1.57 million** board ft of dimension lumber daily.
- ❑ Annual production of **420 million** board ft.



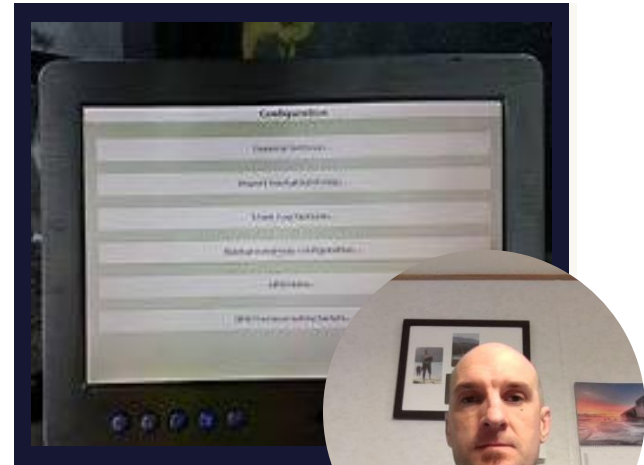
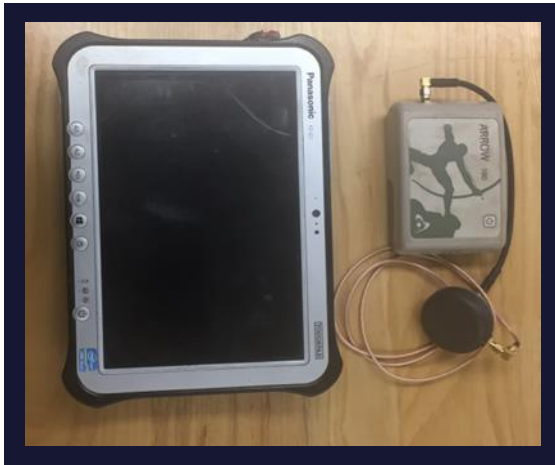
# Background (Cont'd)

- ❑ All Harvest Operations are completed under frozen conditions from Mid-November to Mid-March (Approximately 110 days)



# Op Tracker History

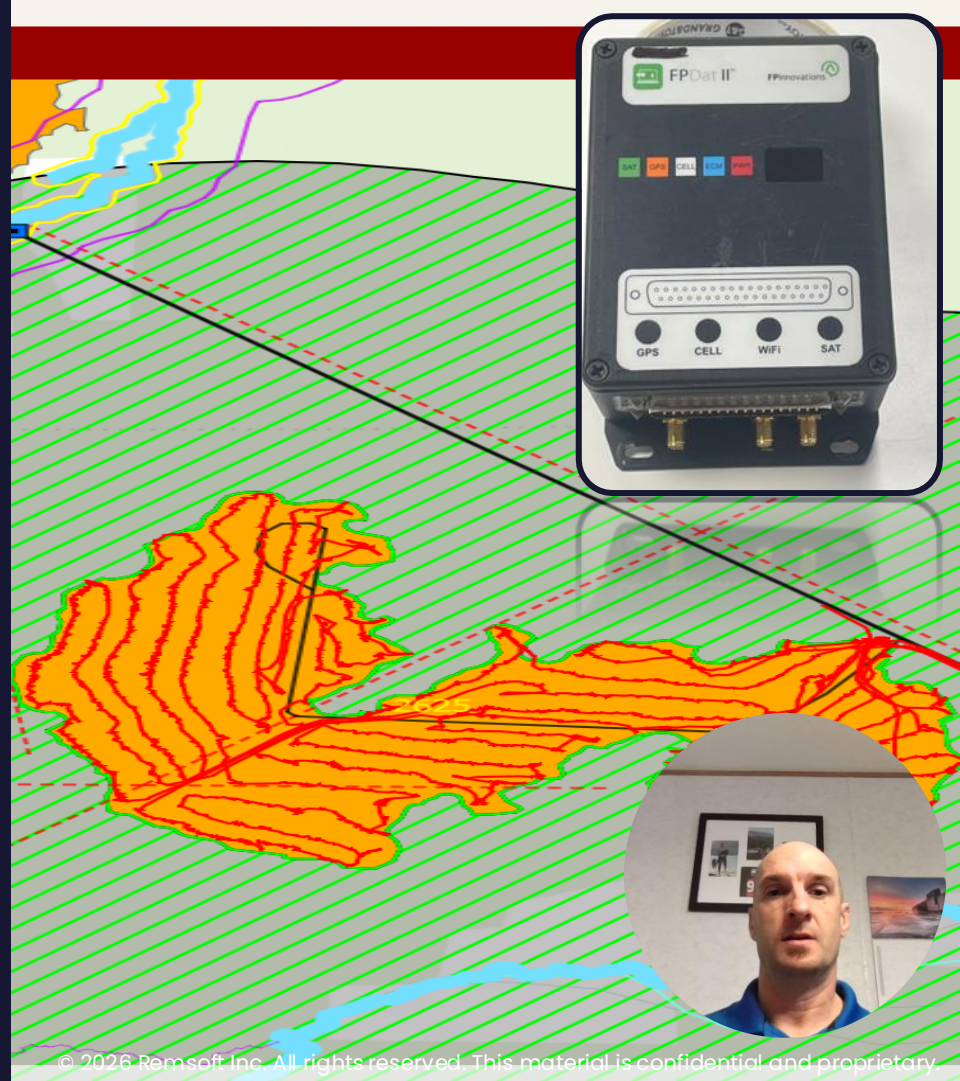
Tolko began experimenting with ArcPad and SX Blue II GPS receivers in Feller Bunchers during the 2007–2008 harvest season and then transitioned to FPDat I's and FPTrak during 2013–2014.



# Op Tracker History (Cont'd)

Tolko was an early investor in **Op Tracker** starting in 2017 with the first TAB units in equipment rolling out in 2018.

When **Op Tracker Box+** was rolled out in 2021, Tolko quickly adopted the newer system paired with the FPDat II hardware to take advantage of the satellite upload capabilities.





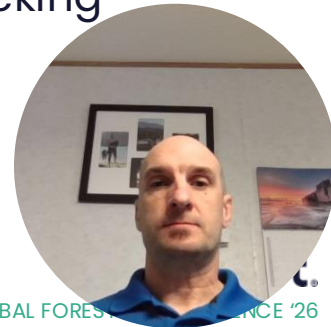
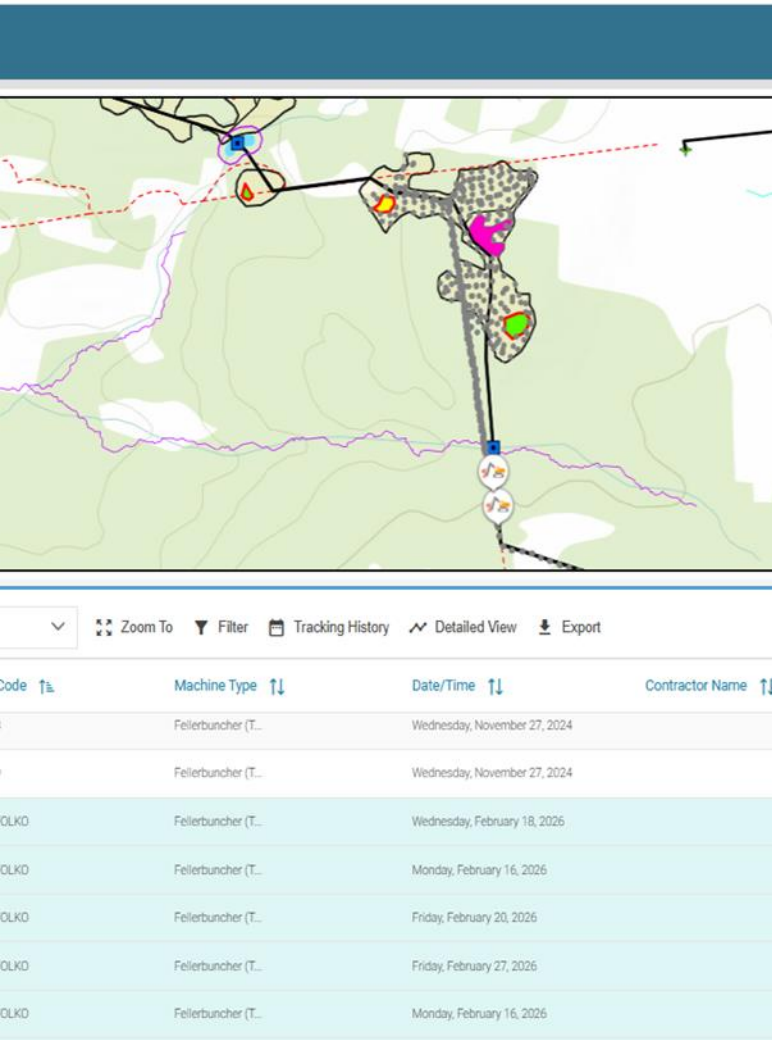
# Current Usage

- ❑ Currently Tolko uses the **Op Tracker** system in **100%** of the Feller Bunchers operating on the Company FMA.
- ❑ Between the 5 main harvesting contractors we have **38 Box+** equipped machines and **17 TAB units** for a total of **55 machines**.
- ❑ Tolko is also experimenting with having **Op Tracker** in front line Cat's to help guide access devel



# Current Usage (Cont'd)

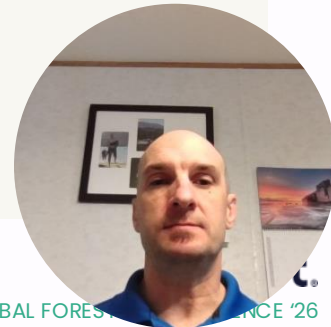
- ❑ Tolko High Level is currently operating 99% Ribbon Free on the landbase. All Boundaries, Roads, Protection and Retention is digital and managed through the downloaded block shapes.
- ❑ Tolko also provides access to the **Op Tracker** Web App to the Harvesting Contractors. They use it for tracking productivity of their machines as well as forecasting movement of their equipment.



# Where Op Tracker delivers value in daily operations

## Visibility & Control

- ✓ Timely, accurate KPI visibility
- ✓ Accurate machine location visibility
- ✓ Accurate as-built data for actual harvest activity



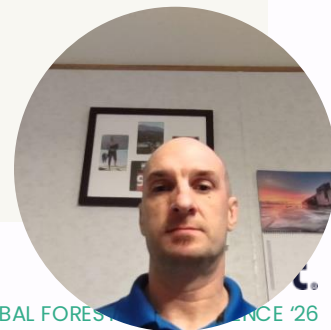
# Where Op Tracker delivers value in daily operations

## Visibility & Control

- ✓ Timely, accurate KPI visibility
- ✓ Accurate machine location visibility
- ✓ Accurate as-built data for actual harvest activity

## Planning & Efficiency

- ✓ Forecast equipment moves to reduce wait times
- ✓ Faster updates to block and plan data
- ✓ Cost savings in block and road layout planning



# Where Op Tracker delivers value in daily operations

## Visibility & Control

- ✓ Timely, accurate KPI visibility
- ✓ Accurate machine location visibility
- ✓ Accurate as-built data for actual harvest activity

## Planning & Efficiency

- ✓ Forecast equipment moves to reduce wait times
- ✓ Faster updates to block and plan data
- ✓ Cost savings in block and road layout planning

## Field Integration & Reliability

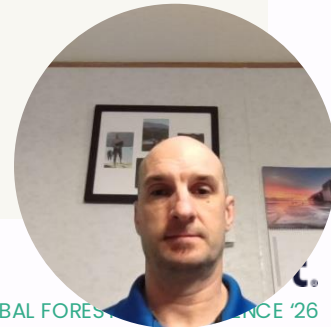
- ✓ Works across devices and field setups
- ✓ Integrates with GPS receivers
- ✓ User-friendly operating system
- ✓ Responsive from Remsoft



# Key adoption considerations

## Adoption & Change

- ✓ Operators may be cautious when introducing a new system
- ✓ Increased visibility may raise initial concerns for teams



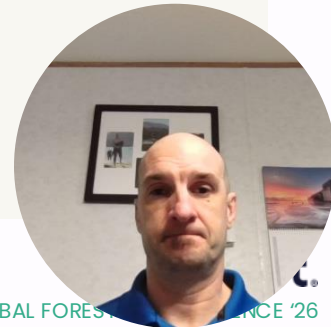
# Key adoption considerations

## Adoption & Change

- ✓ Operators may be cautious when introducing a new system
- ✓ Increased visibility may raise initial concerns for teams

## System & Field Environment

- ✓ Periodic updates or certificate renewals may require coordination
- ✓ Field hardware may require backup components due to operating conditions



# Key adoption considerations

## Adoption & Change

- ✓ Operators may be cautious when introducing a new system
- ✓ Increased visibility may raise initial concerns for teams

## System & Field Environment

- ✓ Periodic updates or certificate renewals may require coordination
- ✓ Field hardware may require backup components due to operating conditions

## Investment & Implementation

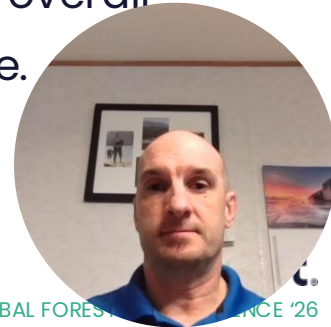
- ✓ Initial cost required to get the system up and running
- ✓ Time required to realize full value from implementation





## Future Outlook

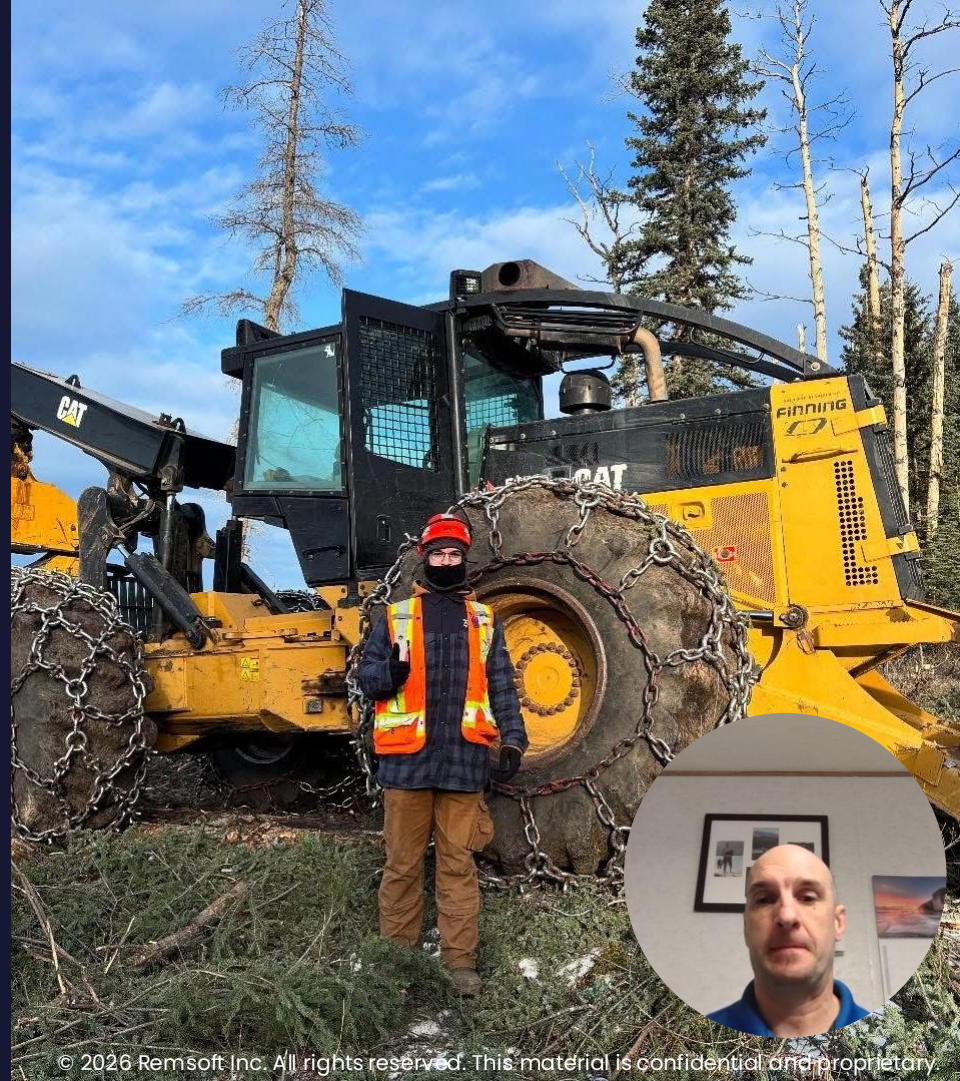
- ❑ Tolko has expanded its use of **Op Tracker** to our Slave Lake/High Prairie and into our Meadow Lake locations.
- ❑ Tolko is continuing to work with Remsoft to offer suggestions that will improve the overall product for the future.



# Questions?

remsoft.

GLOBAL FORESTRY CONFERENCE '26



© 2026 Remsoft Inc. All rights reserved. This material is confidential and proprietary.